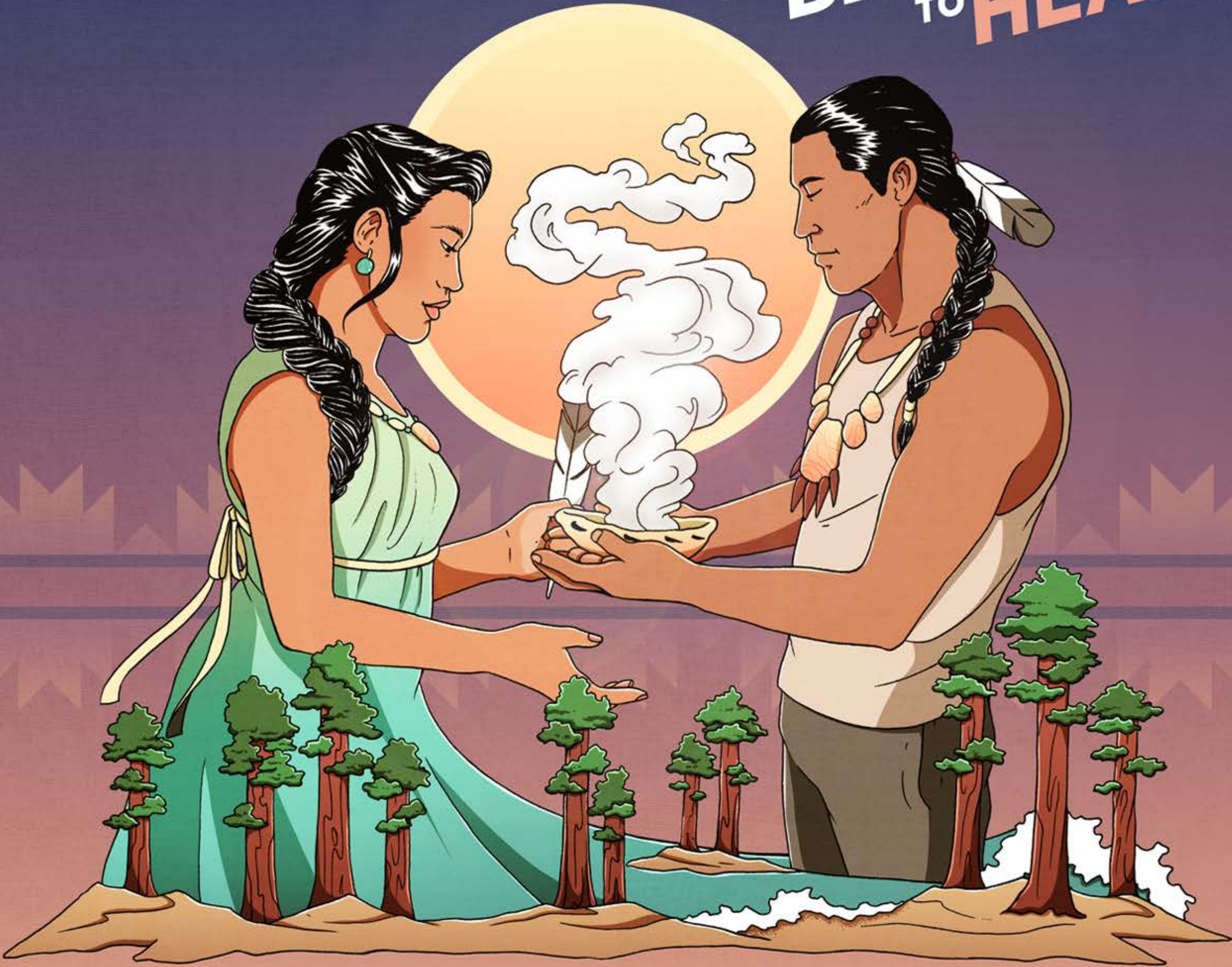


OUR PRAYERS ARE
STRONGER
TOGETHER

HAND
IN HAND
WE BEGIN
TO **HEAL**



**ONE IN FIVE MMIWG KILLED
DUE TO DOMESTIC VIOLENCE
ARE NOT CLASSIFIED AS HOMICIDE VICTIMS**

— Sovereign Bodies Institute





NATIVE-SPECIFIC RESOURCES

RED WOMEN RISING PROJECT
redwomenrising.org

STRONGHEARTS NATIVE HELPLINE
24/7 Helpline: 1-844-762-8483

**NATIONAL INDIGENOUS
WOMEN'S RESOURCE CENTER**
(855)-649-7299

**NATIVE AMERICAN HEALTH CENTER
RED LIGHTNING WOMEN POWER SINGING GROUP**
Contact: AuroraM@Nativehealth.org

INTER-TRIBAL COUNCIL OF CALIFORNIA
Hotline: (916) 342-9120

STRONG HEARTED NATIVE WOMEN'S COALITION
strongheartednativewomen.org/resources/

INDIAN HEALTH CENTER OF SANTA CLARA VALLEY
indianhealthcenter.org/resources

RED EARTH WOMEN'S SOCIETY SUPPORT GROUP
For more information call Kelly at 408-726-6563

ADDITIONAL RESOURCES

FAMILY VIOLENCE APPELLATE PROJECT
(510) 858-7358

**W.E.A.V.E (IN PARTNERSHIP WITH
SACRAMENTO NATIVE AMERICAN HEALTH CENTER)**
Support line: (916) 920-2952

**FRESNO EOC CENTRAL VALLEY
AGAINST HUMAN TRAFFICKING**
(559) 498-8543

NATIONAL DOMESTIC VIOLENCE HOTLINE
1-800-799-7233(SAFE)

RAPE ABUSE INCEST NATIONAL NETWORK
1-800-656-4673(HOPE)

NATIONAL HUMAN TRAFFICKING HOTLINE
1-888-373-7888 TTY:711

